



# MAJESTINE

LUXURY HOTEL APARTMENTS  
BUSINESS BAY

**DAMAC MAISON**  
HOTELS & RESORTS





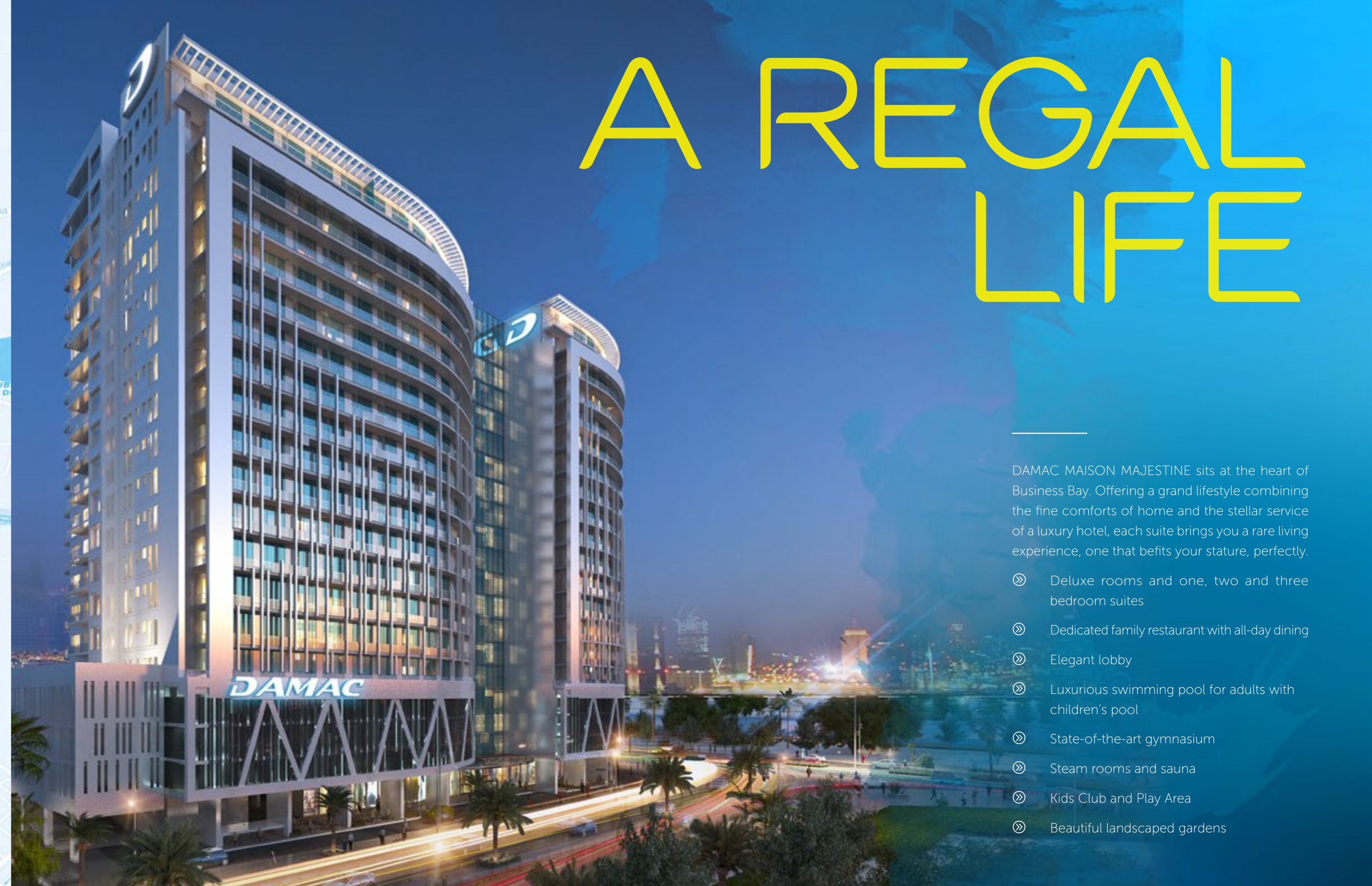


# WORLD WONDERS

THE WORLD'S LARGEST MALL; its tallest tower, the highest dancing fountain – inspired urban concepts that make the world sit up and take notice. You couldn't wish for a more iconic neighbourhood. Look around and everything is spectacular.



# A REGAL LIFE



DAMAC MAISON MAJESTINE sits at the heart of Business Bay. Offering a grand lifestyle combining the fine comforts of home and the stellar service of a luxury hotel, each suite brings you a rare living experience, one that befits your stature, perfectly.

- ⌘ Deluxe rooms and one, two and three bedroom suites
- ⌘ Dedicated family restaurant with all-day dining
- ⌘ Elegant lobby
- ⌘ Luxurious swimming pool for adults with children's pool
- ⌘ State-of-the-art gymnasium
- ⌘ Steam rooms and sauna
- ⌘ Kids Club and Play Area
- ⌘ Beautiful landscaped gardens



# WHERE GLAMOUR RESIDES

EXCLUSIVE TO YOUR NEEDS. Choose from furnished and serviced deluxe rooms, to one, two and three bedroom suites. Enjoy round-the-clock concierge service and 24-hour valet parking, plus a host of top amenities without ever leaving the building.

# EVERYTHING YOU NEED

COME HOME to your luxurious suite, tastefully appointed interiors, a fitted kitchen, spacious bathrooms and more. It's the best of all worlds within your suite. Every element is designed to make you feel at home in luxury.

Disclaimer: All pictures, plans, layouts, information, data and details included in this brochure are indicative only and may change at any time up to the final 'as built' status in accordance with final designs of the project, regulatory approvals and planning permissions.



# HOME SUITE HOME

THOUGHTFULLY LOCATED SPACES and expertly designed interiors detail every square inch. At DAMAC Maison Majestine, there are quality finishes, premium fittings and splendid furnishings.

Disclaimer: All pictures, plans, layouts, information, data and details included in this brochure are indicative only and may change at any time up to the final 'as built' status in accordance with final designs of the project, regulatory approvals and planning permissions.

# GLOBAL FLAVOURS

DAMAC Maison Majestine features an informal café, which offers a fresh take on contemporary dining with delightful choices for breakfast, lunch and dinner. In addition, a tranquil al fresco setting serves the finest Arabic fare and a wide array of unique shisha flavours.





WHEN THE DAY IS DONE, why not retreat to the comforts of the temperature-controlled swimming pool. Go for a swim and enjoy a little downtime in the calming waters – there's no better way to let go of everyday stress.

# REFRESHING TIMES

# WELLBEING ASSURED



Disclaimer: All pictures, plans, layouts, information, data and details included in this brochure are indicative only and may change at any time up to the final 'as built' status in accordance with final designs of the project, regulatory approvals and planning permissions.

ENHANCE YOUR WELLBEING by exercising at the state-of-the-art gymnasium, with all of the latest premium fitness equipment. Then reward yourself with a session of relaxation in the plush steam rooms and sauna.



**DAMAC MAISON**  
HOTELS & RESORTS

YOUR LUXURY SUITE is managed by DAMAC Maison Hotels & Resorts, ensuring exceptional service when you live in your luxury suite and premium returns when you don't. By being part of the unique rental pool, managed by our team of experts, you can ensure you get a favourable annual yield.\*

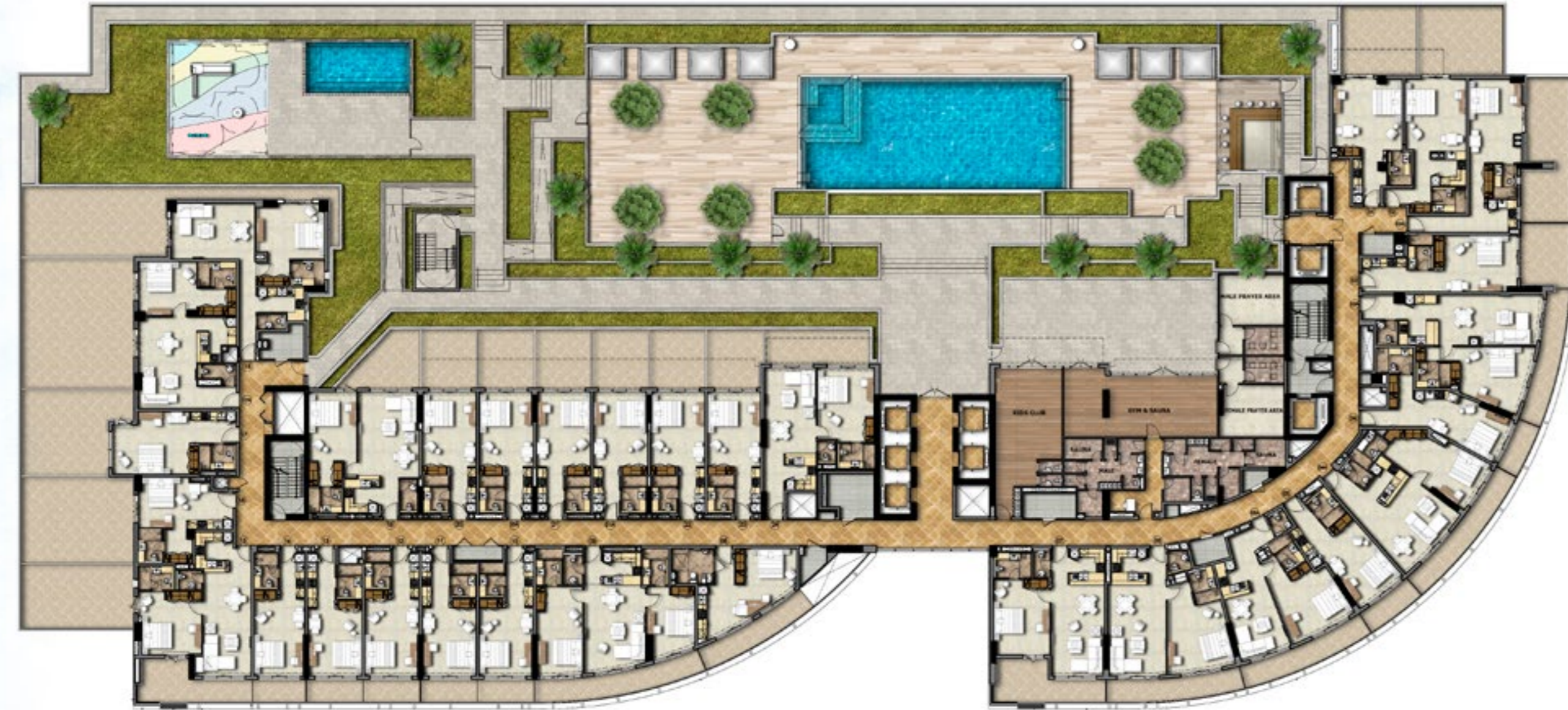
\*Based on current market performance.

FAVOURABLE  
RETURNS

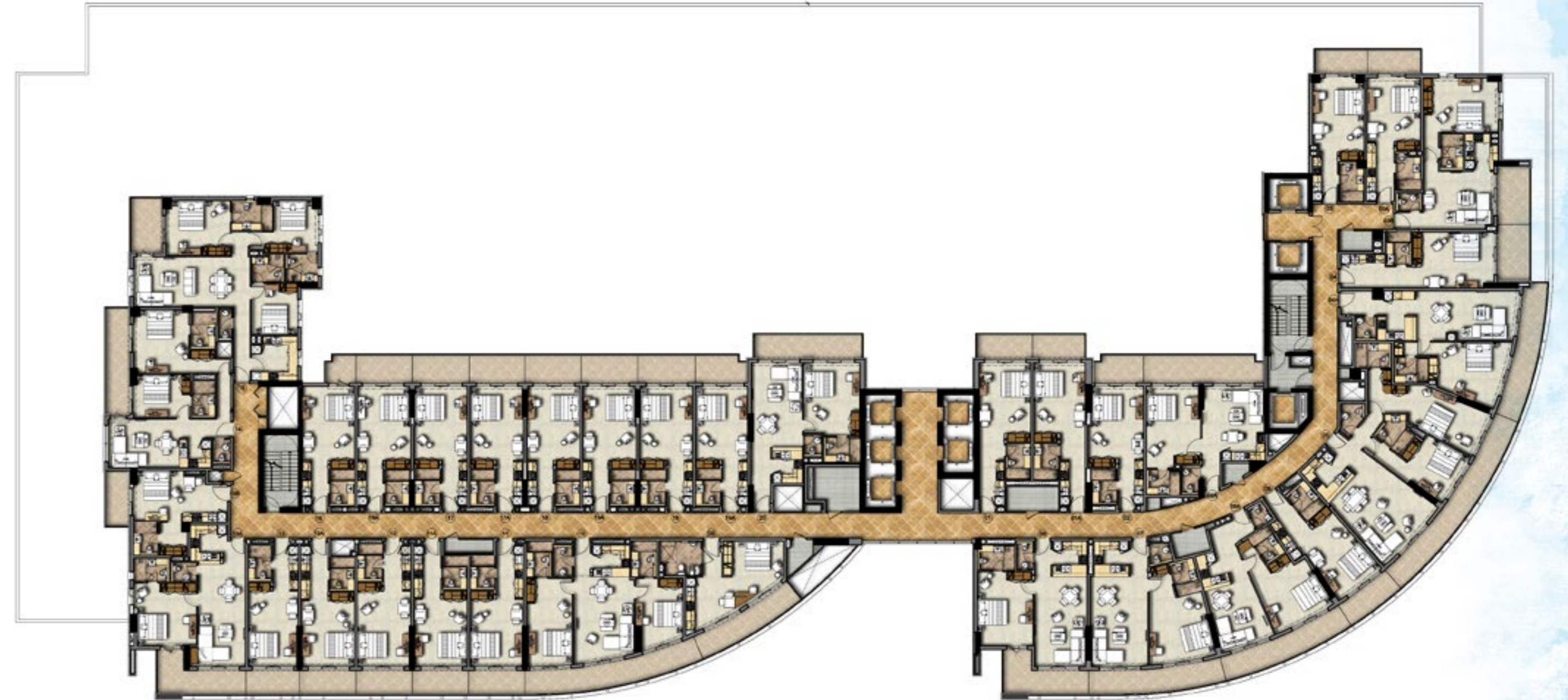
FLOOR  
PLANS



TYPICAL FLOOR PLAN  
Level 4 (Amenities)



TYPICAL FLOOR PLAN  
Level 5

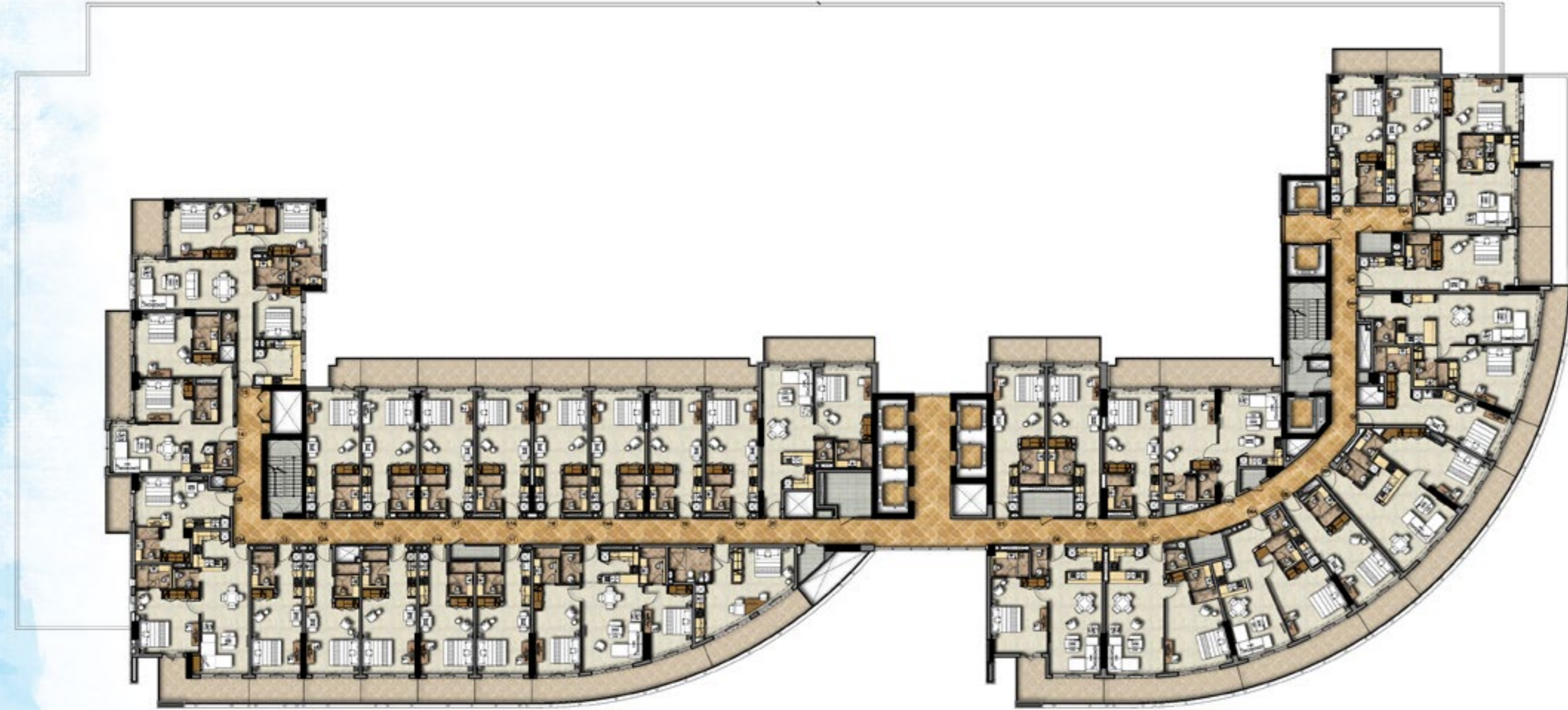


Disclaimer: All pictures, plans, layouts, information, data and details included in this brochure are indicative only and may change at any time up to the final 'as built' status in accordance with final designs of the project, regulatory approvals and planning permissions.

Disclaimer: All pictures, plans, layouts, information, data and details included in this brochure are indicative only and may change at any time up to the final 'as built' status in accordance with final designs of the project, regulatory approvals and planning permissions.

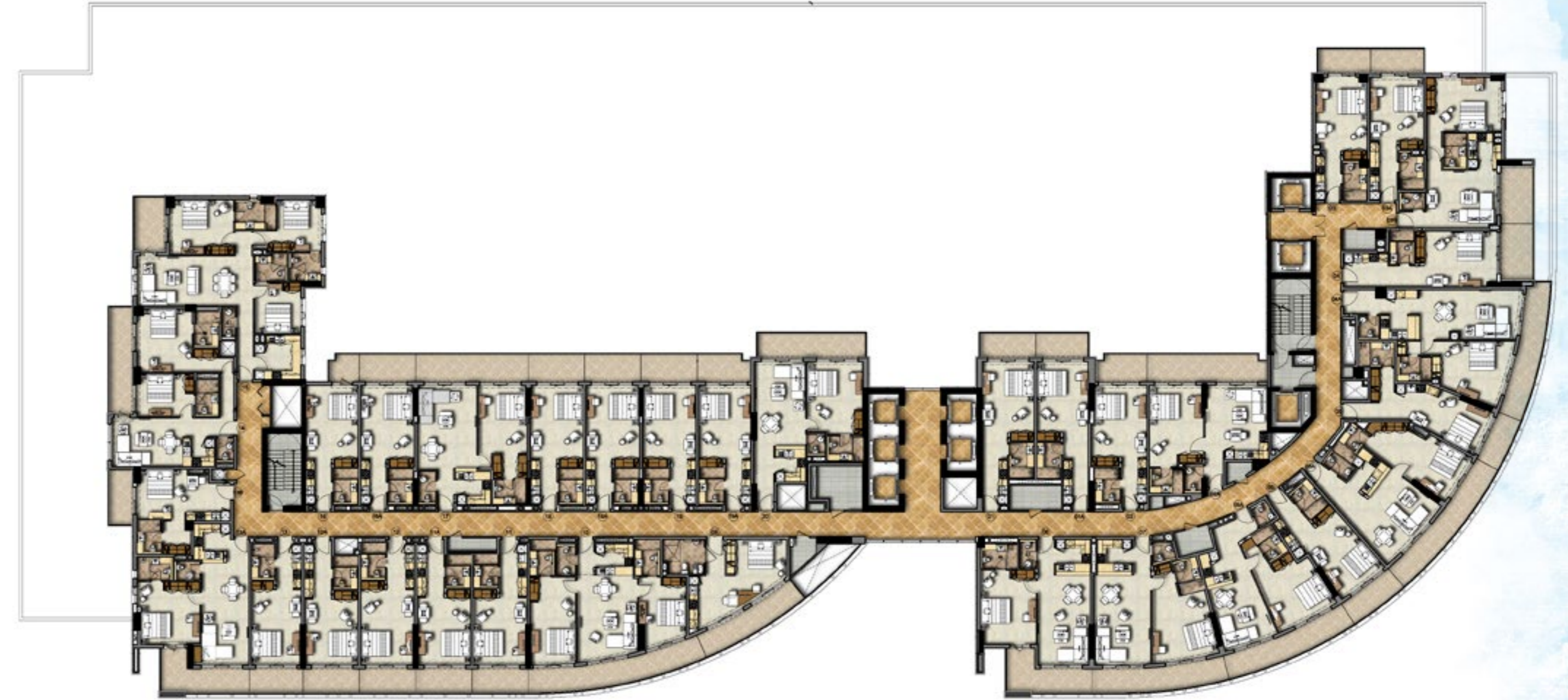


TYPICAL FLOOR PLAN  
Level 6



Disclaimer: All pictures, plans, layouts, information, data and details included in this brochure are indicative only and may change at any time up to the final 'as built' status in accordance with final designs of the project, regulatory approvals and planning permissions.

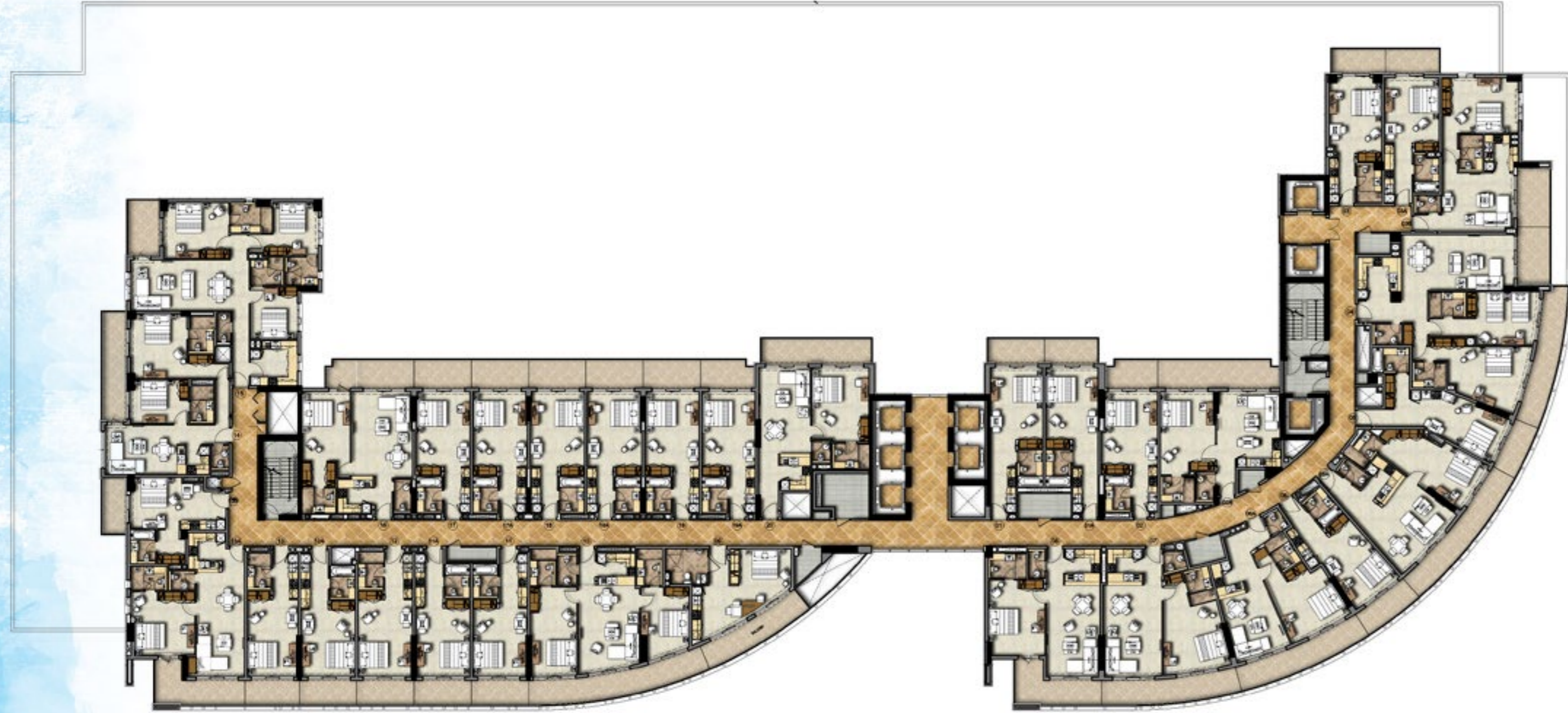
TYPICAL FLOOR PLAN  
Level 7



Disclaimer: All pictures, plans, layouts, information, data and details included in this brochure are indicative only and may change at any time up to the final 'as built' status in accordance with final designs of the project, regulatory approvals and planning permissions.

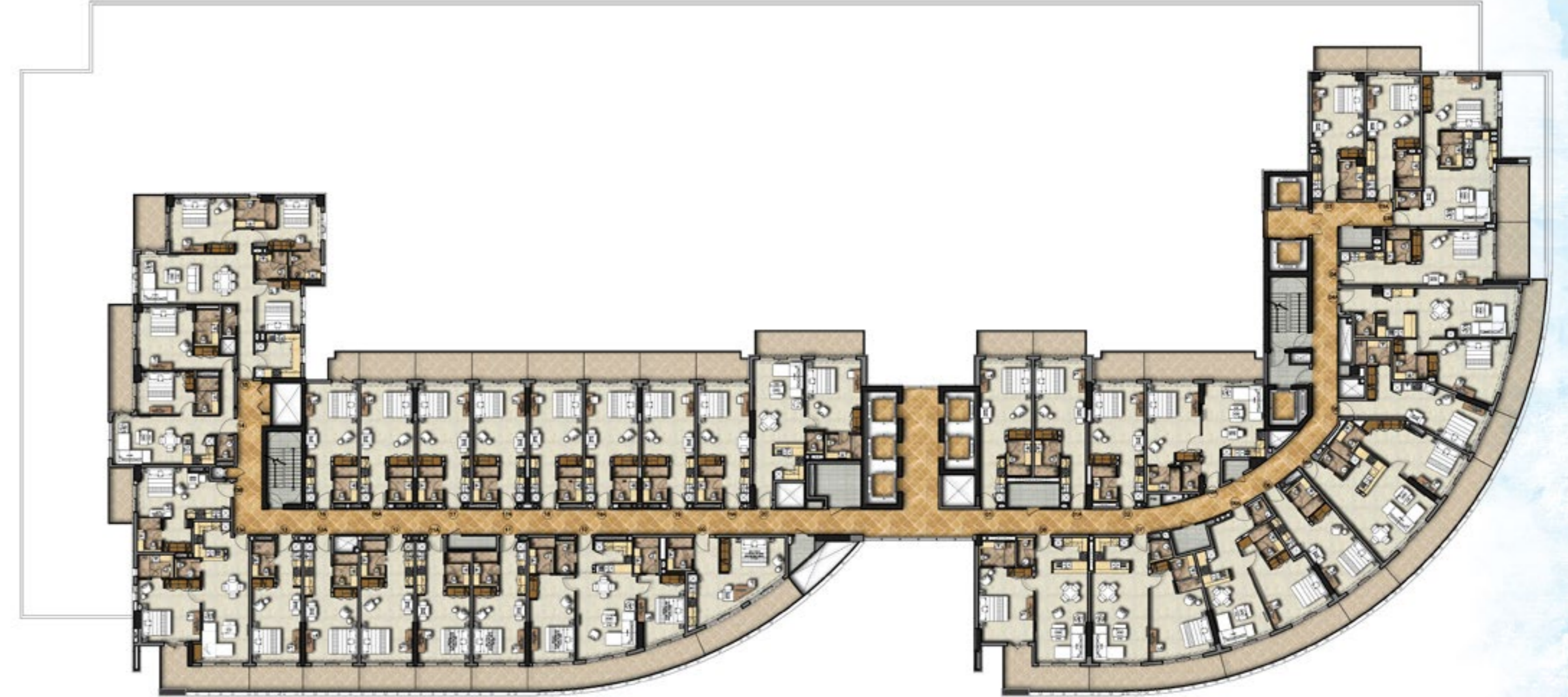


TYPICAL FLOOR PLAN  
Level 8



Disclaimer: All pictures, plans, layouts, information, data and details included in this brochure are indicative only and may change at any time up to the final 'as built' status in accordance with final designs of the project, regulatory approvals and planning permissions.

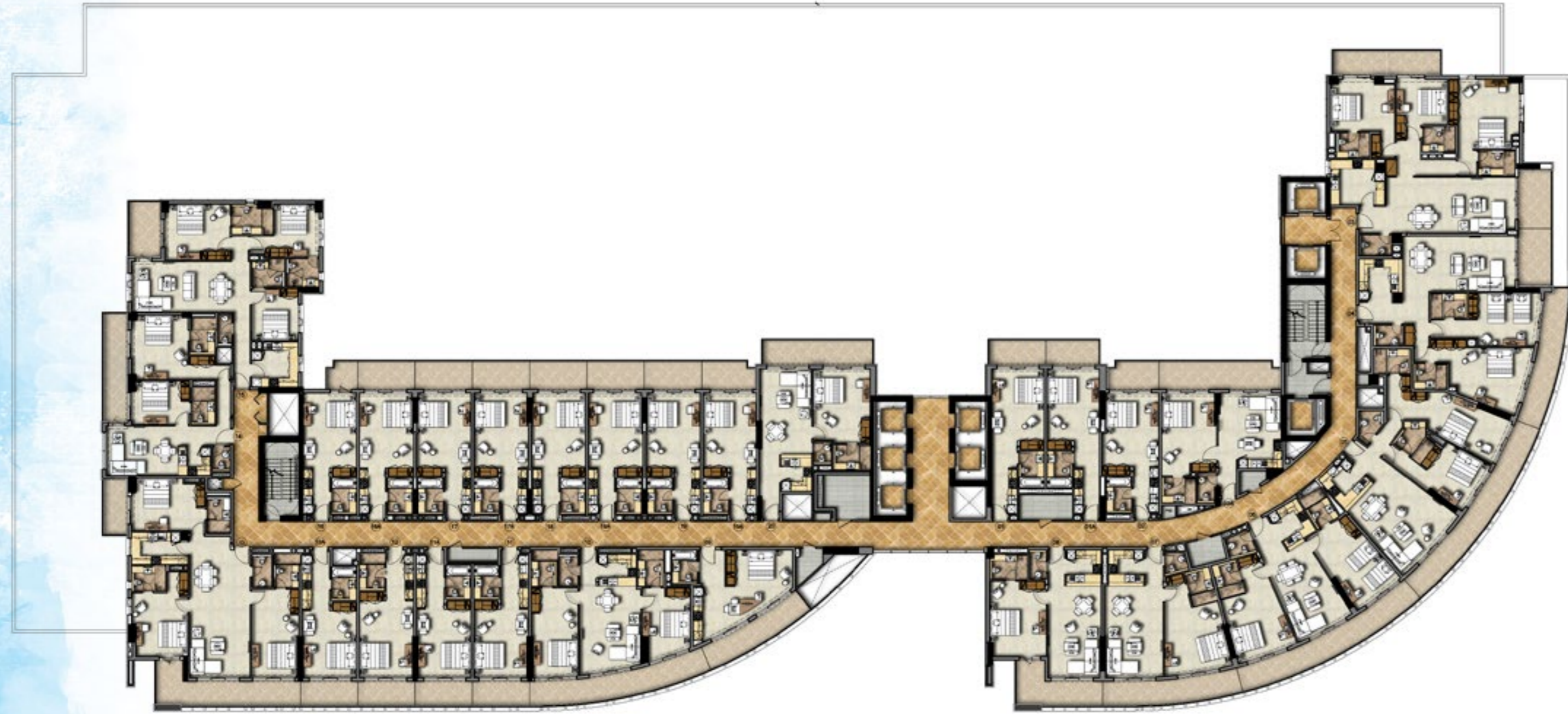
TYPICAL FLOOR PLAN  
Level 9



Disclaimer: All pictures, plans, layouts, information, data and details included in this brochure are indicative only and may change at any time up to the final 'as built' status in accordance with final designs of the project, regulatory approvals and planning permissions.

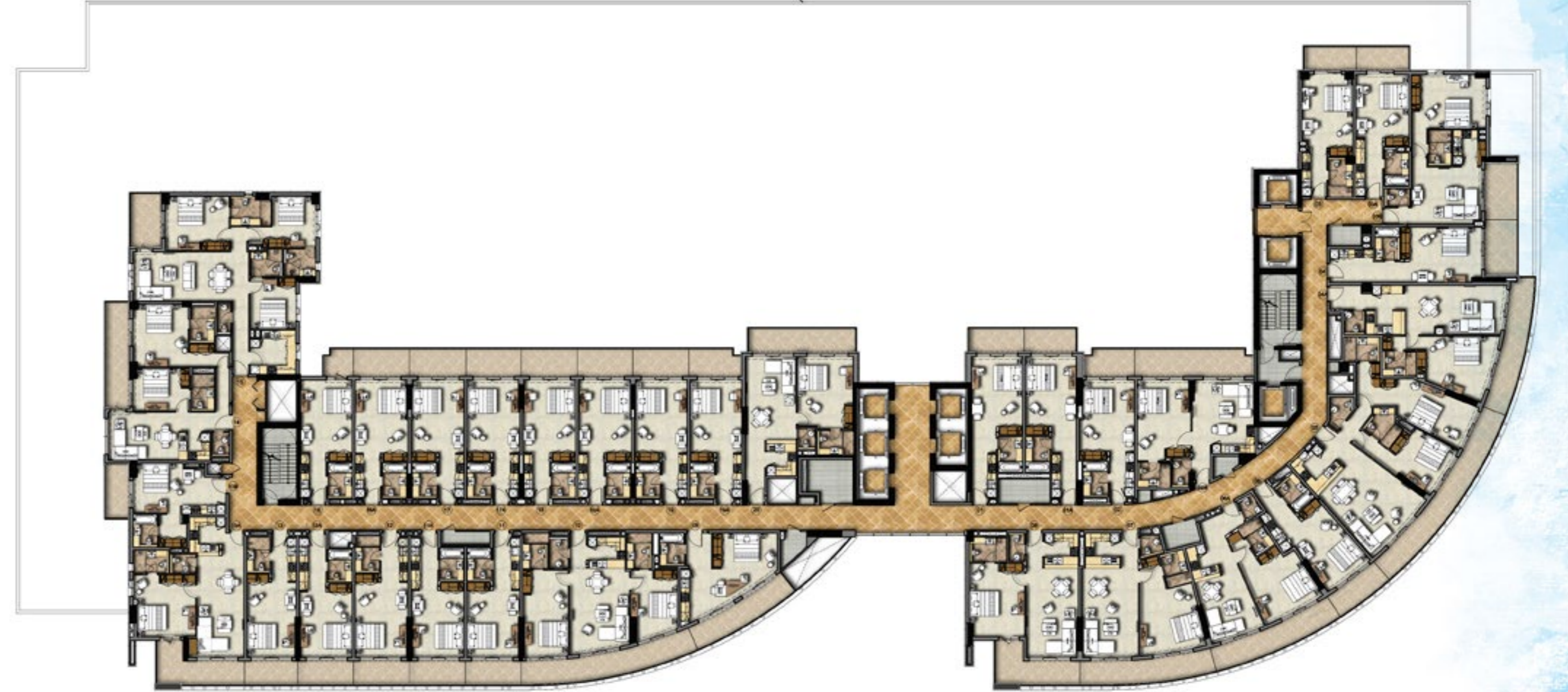


TYPICAL FLOOR PLAN  
Level 10



Disclaimer: All pictures, plans, layouts, information, data and details included in this brochure are indicative only and may change at any time up to the final 'as built' status in accordance with final designs of the project, regulatory approvals and planning permissions.

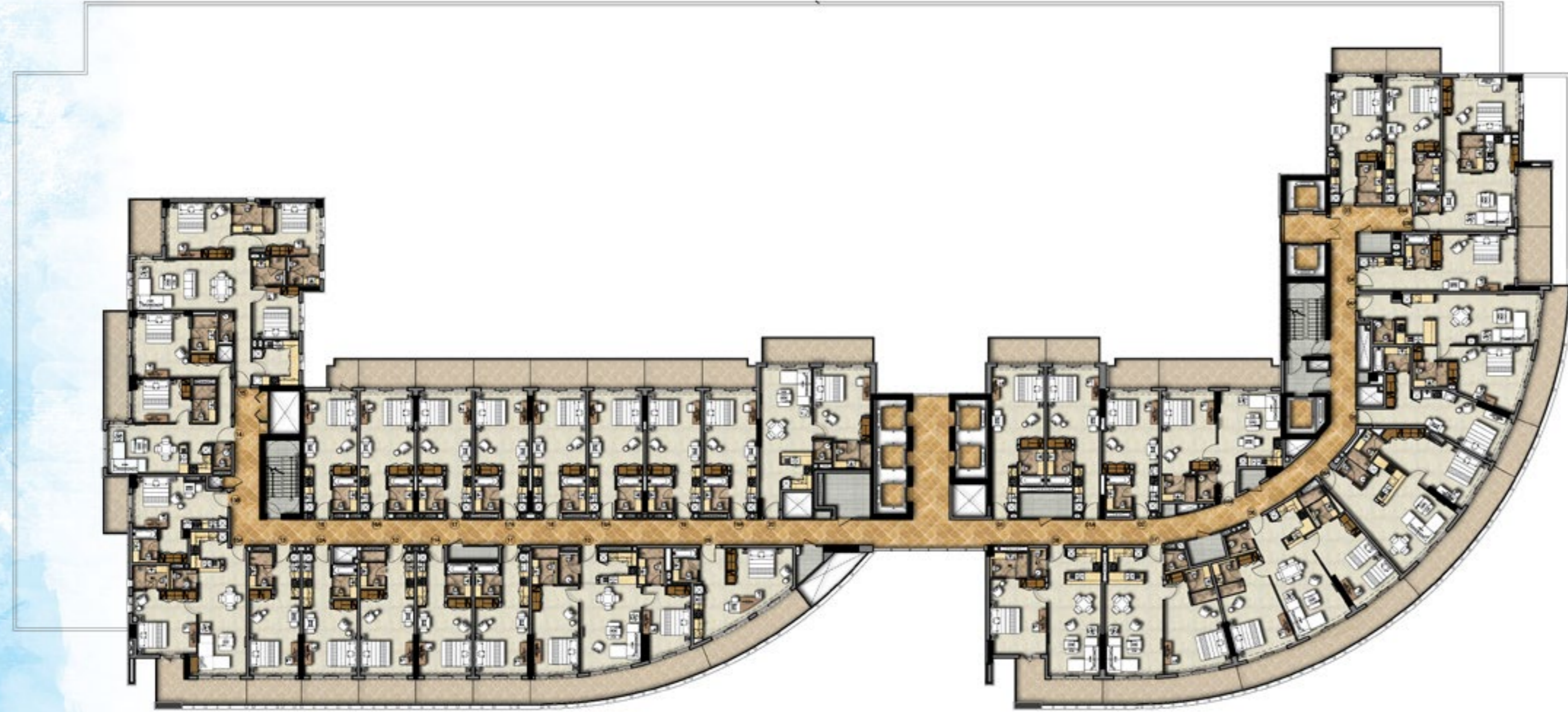
TYPICAL FLOOR PLAN  
Level 11



Disclaimer: All pictures, plans, layouts, information, data and details included in this brochure are indicative only and may change at any time up to the final 'as built' status in accordance with final designs of the project, regulatory approvals and planning permissions.

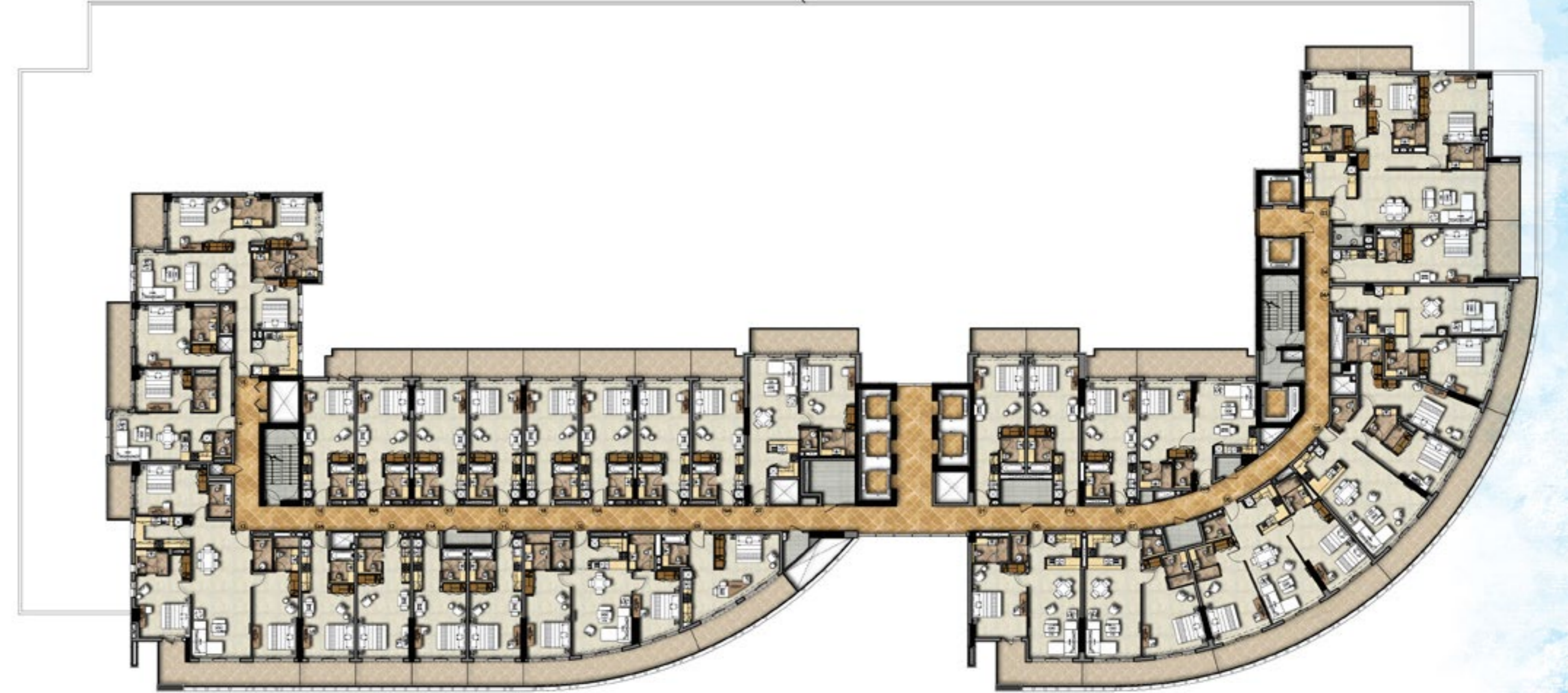


TYPICAL FLOOR PLAN  
Level 12



Disclaimer: All pictures, plans, layouts, information, data and details included in this brochure are indicative only and may change at any time up to the final 'as built' status in accordance with final designs of the project, regulatory approvals and planning permissions.

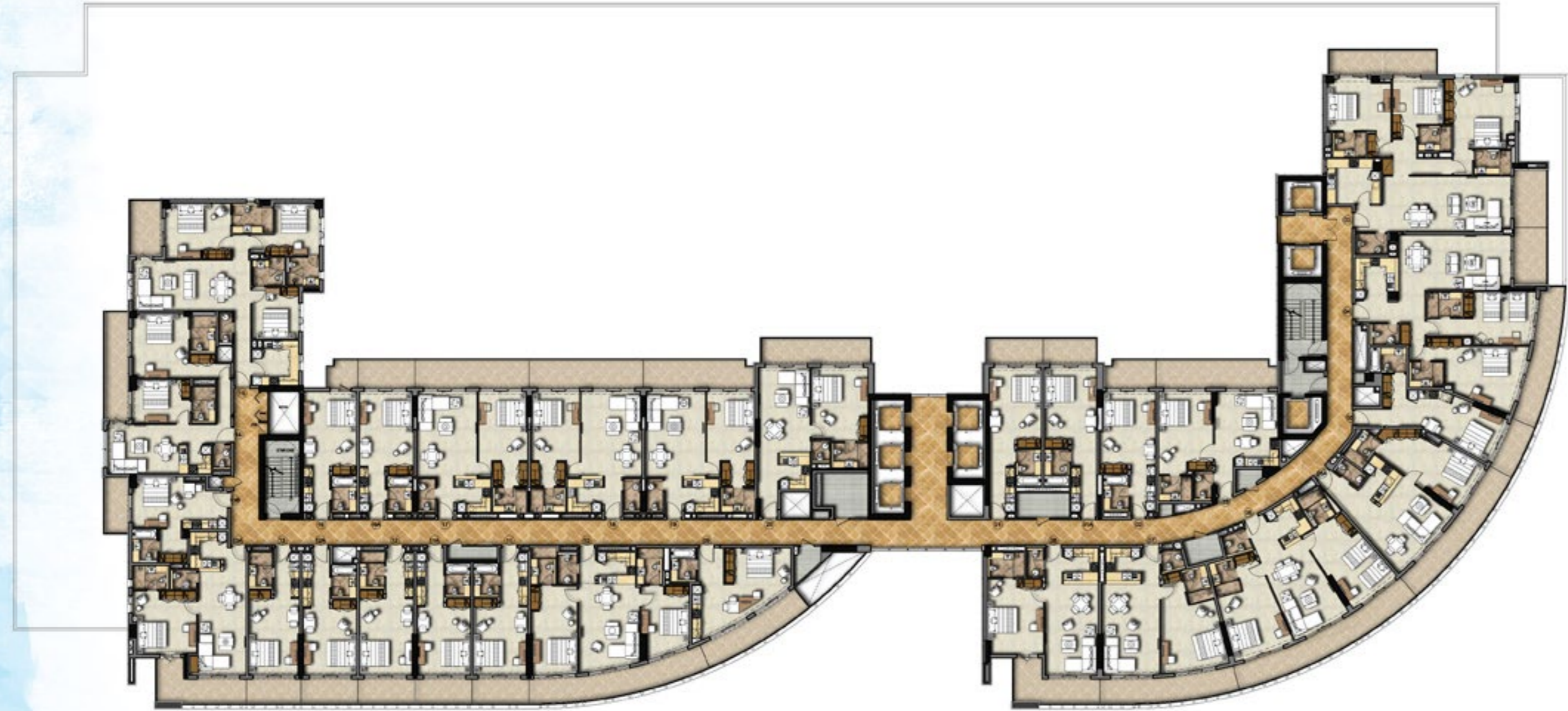
TYPICAL FLOOR PLAN  
Level 13



Disclaimer: All pictures, plans, layouts, information, data and details included in this brochure are indicative only and may change at any time up to the final 'as built' status in accordance with final designs of the project, regulatory approvals and planning permissions.



TYPICAL FLOOR PLAN  
Level 14



Disclaimer: All pictures, plans, layouts, information, data and details included in this brochure are indicative only and may change at any time up to the final 'as built' status in accordance with final designs of the project, regulatory approvals and planning permissions.

TYPICAL FLOOR PLAN  
Level 15



Disclaimer: All pictures, plans, layouts, information, data and details included in this brochure are indicative only and may change at any time up to the final 'as built' status in accordance with final designs of the project, regulatory approvals and planning permissions.

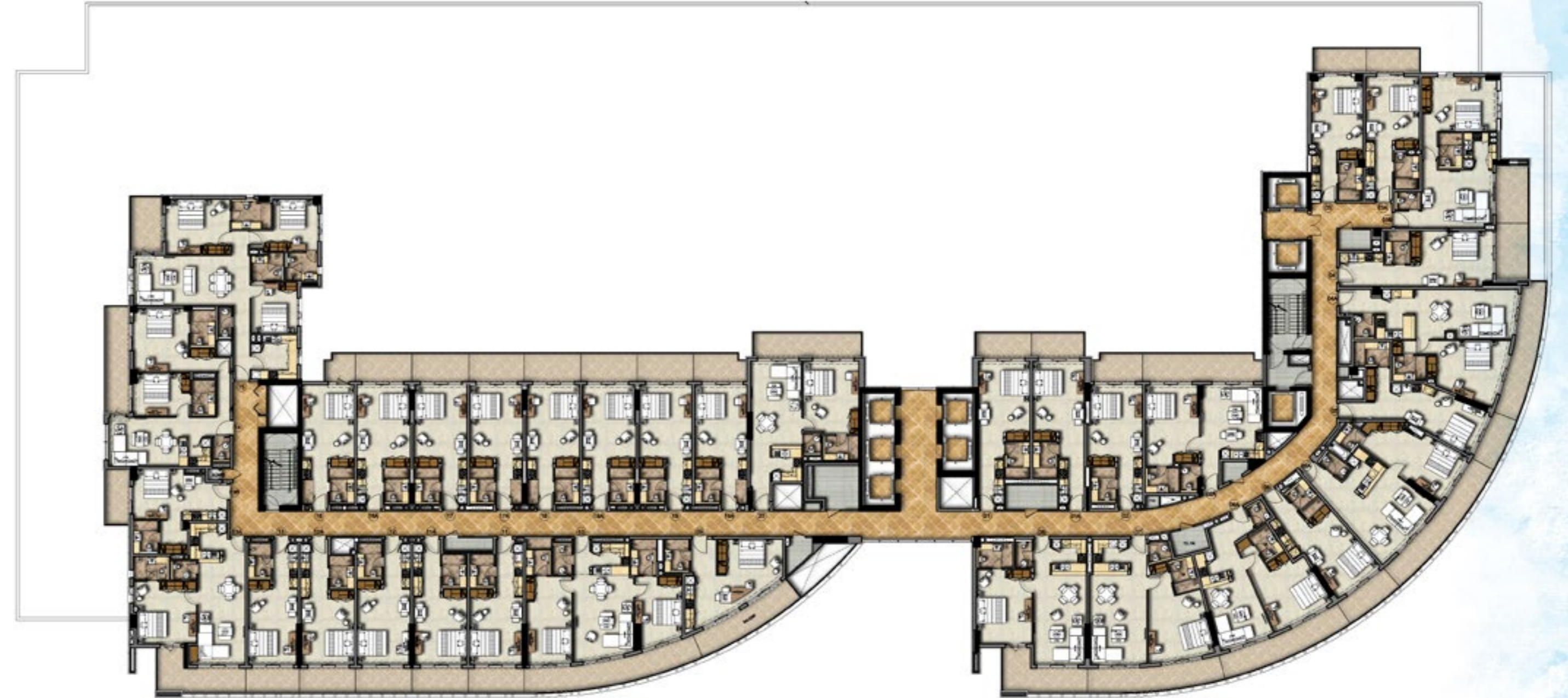


TYPICAL FLOOR PLAN  
Level 16



Disclaimer: All pictures, plans, layouts, information, data and details included in this brochure are indicative only and may change at any time up to the final 'as built' status in accordance with final designs of the project, regulatory approvals and planning permissions.

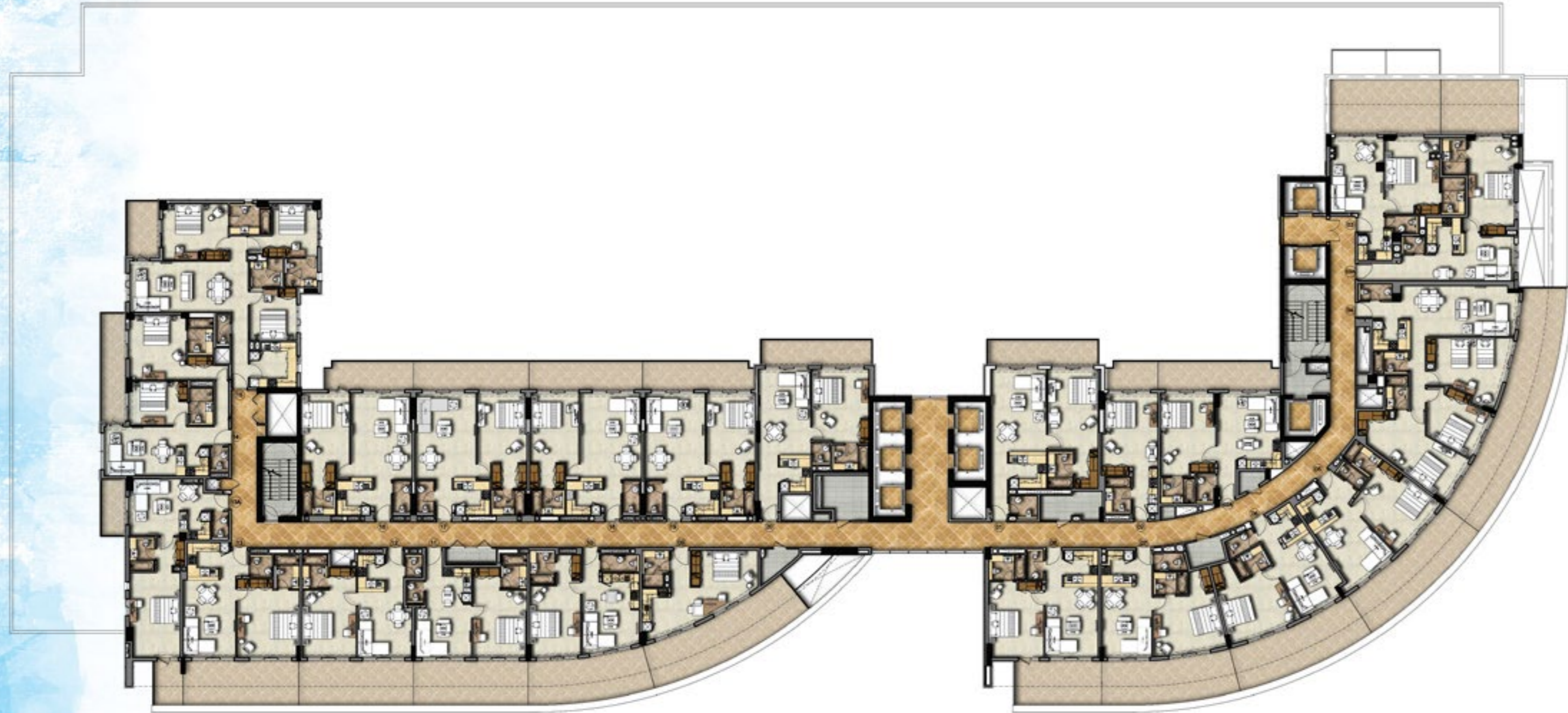
TYPICAL FLOOR PLAN  
Level 17



Disclaimer: All pictures, plans, layouts, information, data and details included in this brochure are indicative only and may change at any time up to the final 'as built' status in accordance with final designs of the project, regulatory approvals and planning permissions.

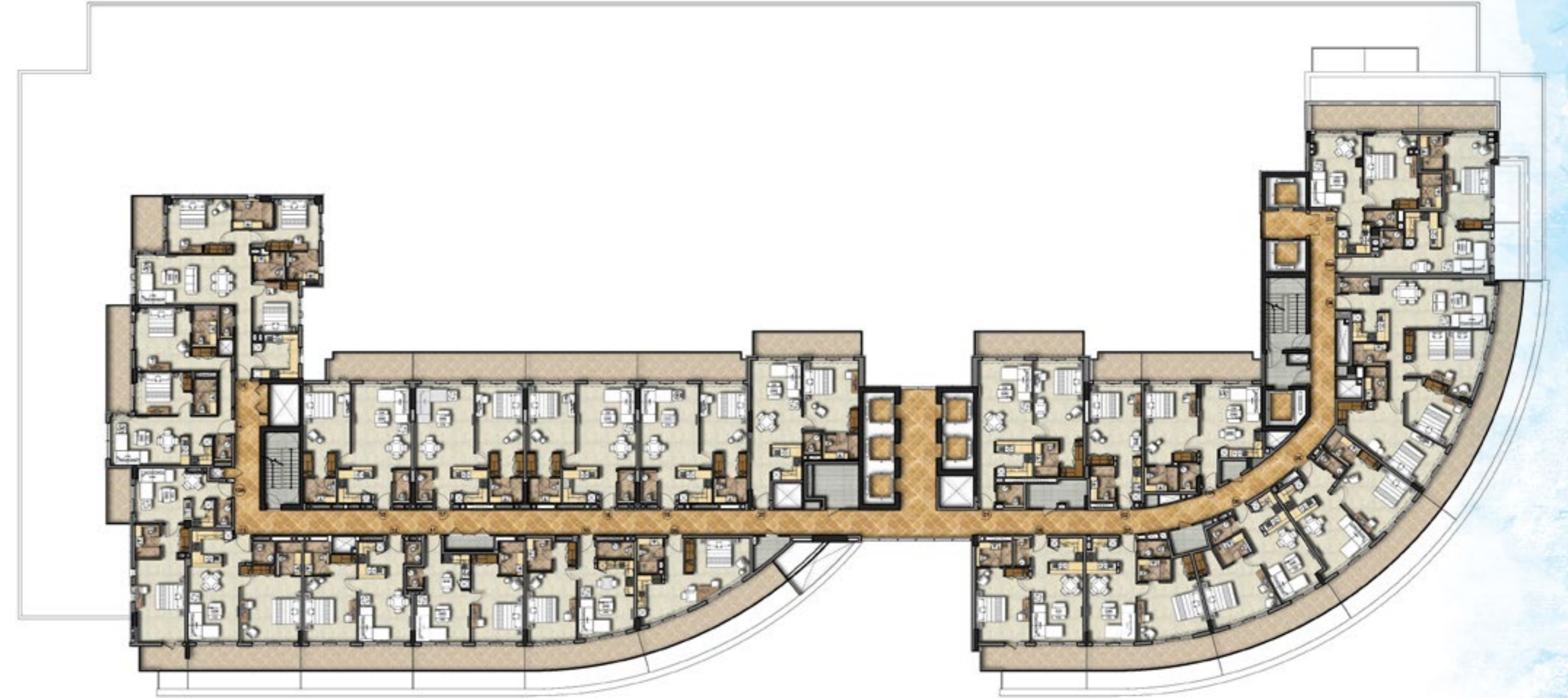


TYPICAL FLOOR PLAN  
Level 18



Disclaimer: All pictures, plans, layouts, information, data and details included in this brochure are indicative only and may change at any time up to the final 'as built' status in accordance with final designs of the project, regulatory approvals and planning permissions.

TYPICAL FLOOR PLAN  
Level 19



Disclaimer: All pictures, plans, layouts, information, data and details included in this brochure are indicative only and may change at any time up to the final 'as built' status in accordance with final designs of the project, regulatory approvals and planning permissions.



# LUXURY BY APPOINTMENT

**DAMAC**

CONTACT US AT ANY OF OUR OFFICES OR VISIT [DAMACPROPERTIES.COM](http://DAMACPROPERTIES.COM)

To date, DAMAC Properties has completed almost 16,800 units and currently has a development portfolio of over 44,000 units at various stages of planning and progress. DAMAC Properties' hospitality portfolio will extend to reach around 13,000 units of hotel rooms, serviced hotel apartments and serviced villas.\*

With prestigious projects spanning the entire Middle East, the DAMAC brand is synonymous with quality and luxury.

\*Figures as of 30th September 2016.

## UNITED ARAB EMIRATES

Tel: +971 4 301 9999

### DUBAI

Ocean Heights

Al Sufouh Road

Tel: +971 4 450 8777

Fax: +971 4 454 2891

E-mail: [dubai@damacgroup.com](mailto:dubai@damacgroup.com)

### PARK TOWERS

Dubai International Financial Centre

Tel: +971 4 376 3600

Fax: +971 4 373 1490

E-mail: [dubai@damacgroup.com](mailto:dubai@damacgroup.com)

### AKOYA

Al Hebiah Third

Al Qudra Road

PO Box 2195, Dubai, UAE

Tel: +971 4 818 3300

E-mail: [dubai@damacgroup.com](mailto:dubai@damacgroup.com)

## KINGDOM OF SAUDI ARABIA

### RIYADH

14th Floor, Al Anoud Building

King Fahd Road

Tel: +966 11 293 2883

Fax: +966 11 279 2462

E-mail: [ksa@damacgroup.com](mailto:ksa@damacgroup.com)

### JEDDAH

Al-Shumeisi Building

2nd Bldg after Tahliah Shopping Centre

Tahliah Street

Tel: +966 1 2 284 5445

Fax: +966 1 2 284 5446

E-mail: [ksa@damacgroup.com](mailto:ksa@damacgroup.com)

## QATAR

Office 04, 4th Floor

Al Qassar Tower (next to Olympic Tower)

West Bay Area, Doha

PO Box 18223

Tel: +974 44 666 986

Fax: +974 44 554 576

E-mail: [doha@damacgroup.com](mailto:doha@damacgroup.com)



/Damacpropertiesofficial



/Damacofficial



/Damacofficial



/Damacofficial



***DAMAC***